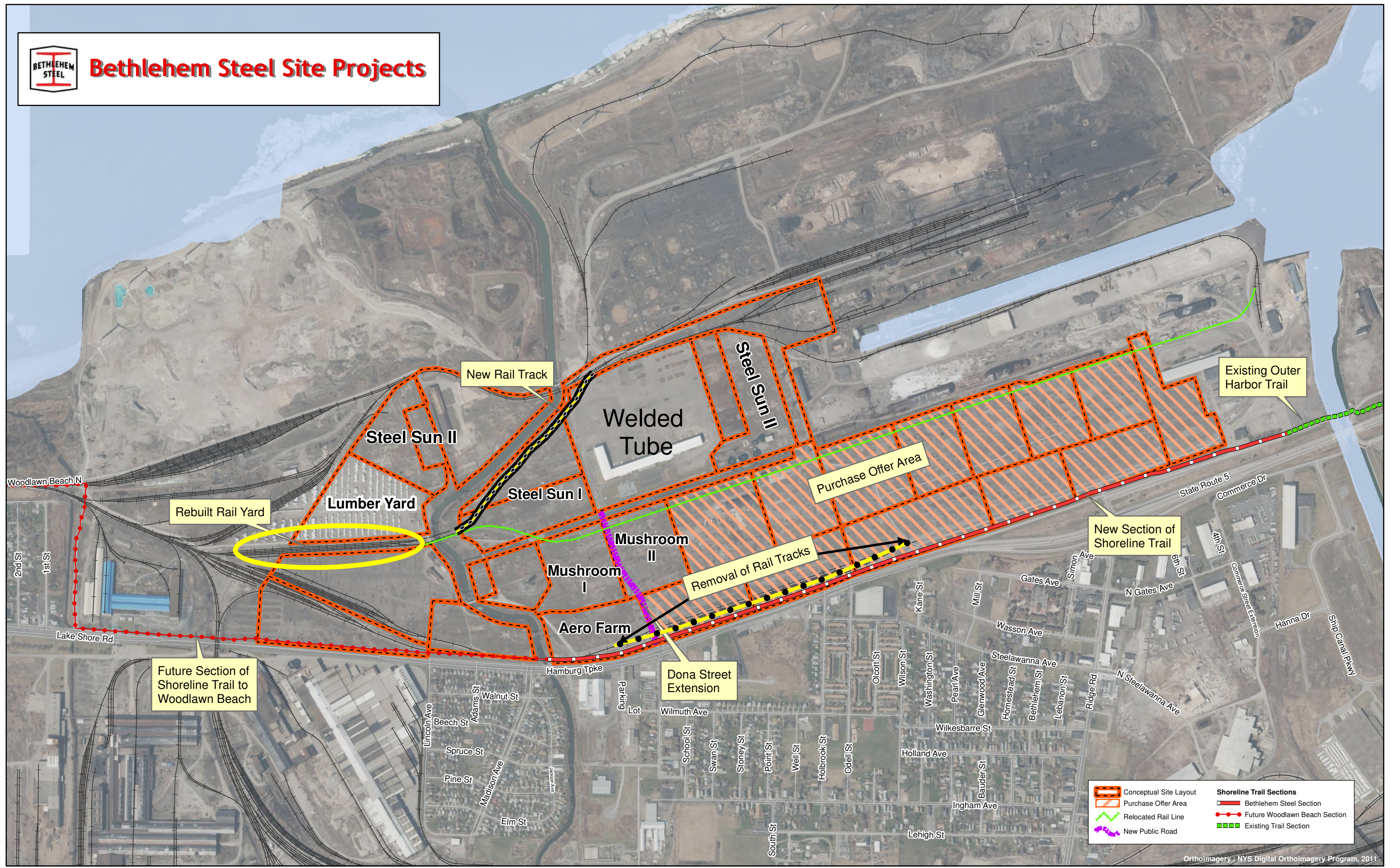




Bethlehem Steel Site Projects



Future Section of Shoreline Trail to Woodlawn Beach

Rebuilt Rail Yard

New Rail Track

Welded Tube

Steel Sun II

Steel Sun II

Steel Sun I

Mushroom II

Mushroom I

Aero Farm

Dona Street Extension

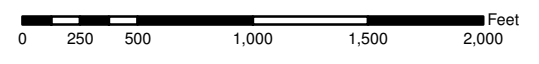
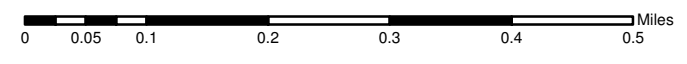
Purchase Offer Area

Removal of Rail Tracks

Existing Outer Harbor Trail

New Section of Shoreline Trail

Conceptual Site Layout		Shoreline Trail Sections	
	Conceptual Site Layout		Bethlehem Steel Section
	Purchase Offer Area		Future Woodlawn Beach Section
	Relocated Rail Line		Existing Trail Section
	New Public Road		



Orthoimagery - NYS Digital Orthoimagery Program, 2011



Created by the Erie County:
 Office of Geographic Information Services
 Date: 7/8/2016 Time: 3:15:55 PM
 Document Name: BethSteel_Projects